

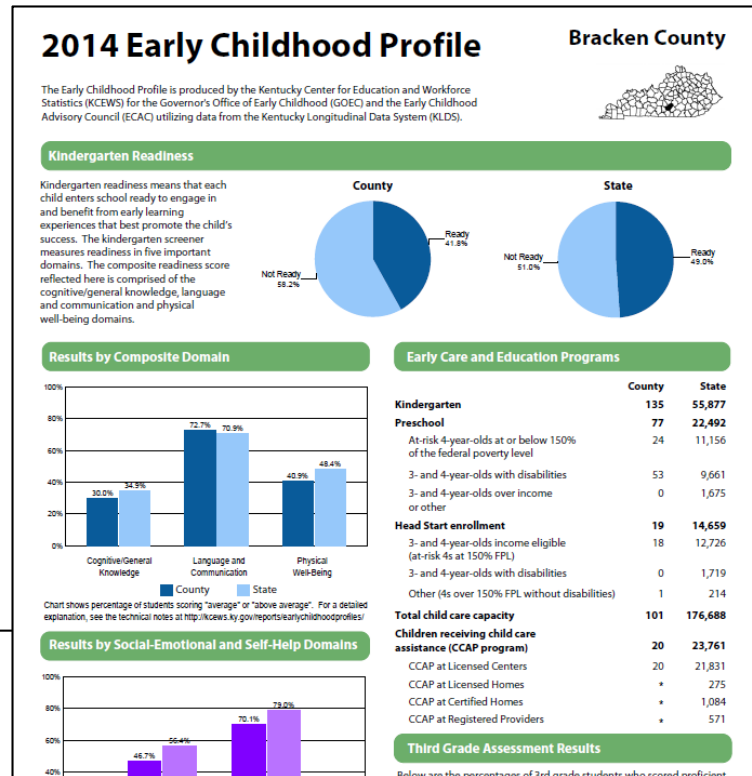


Using Data to Improve Student Achievement

## Anatomy of Success: Overcoming Challenges by Understanding and Utilizing Data and Assessments to Raise English Learner Achievement

### State Examples

Kentucky's Early Childhood Profiles help local leaders and educators develop strategies to ensure every child in their community, including children from non-English speaking homes, is kindergarten ready.



### Family, Health and Services

Select Indicators	County #	County %	State %
Number of children 0-2 years old	345	4.1%	3.8%
Number of children 3-4 years old	212	2.5%	2.6%
Children living below 100% poverty	206	29.9%	29.9%
Children living below 150% poverty	309	44.8%	42.2%
Children living below 200% poverty	360	52.2%	53.1%
Children with substantiated child abuse/neglect	59	2.8%	1.6%
Households with non-English language in home	25	0.8%	5.6%
Births to mothers who are not high school graduates**	10	11.0%	18.0%
Births to teenage girls 15-19 years old**	9	34^	43^
Low birth weight babies (born less than 5.5 pounds)**	13	14.0%	9.0%
Preterm babies (born before 37 weeks of pregnancy)**	13	12.0%	11.0%

^ Rate per 1,000 females ages 15-19  
 \*\*Previous reports used a three-year total. These totals are for one year.

### Workforce Quality

Since 2001, early childhood educators have had access to college and non-college scholarships to improve knowledge and skills.

Children receiving health insurance  
 Families served by the First Steps program 17  
 Number of families served by the HANDS home visitation program 24

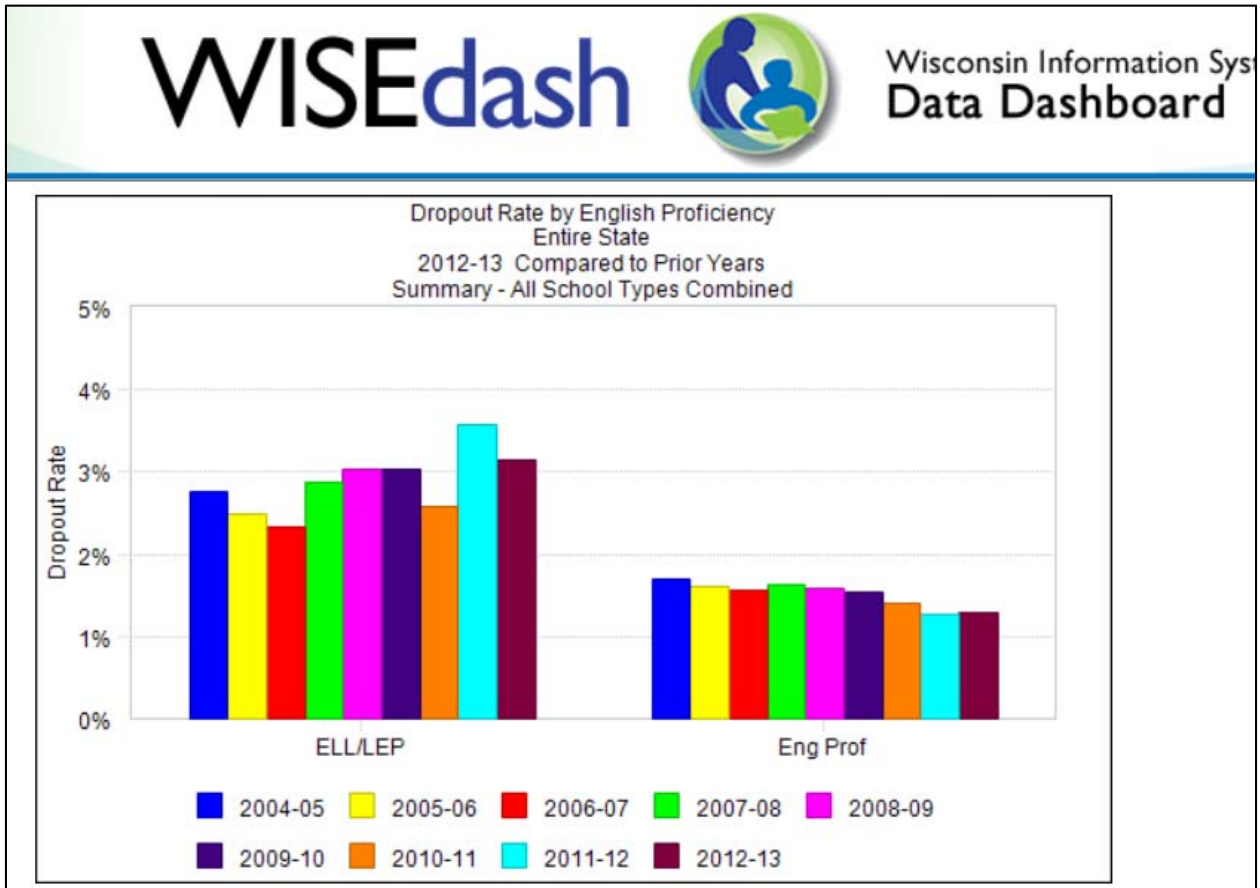
### STAR Ratings for Child Care

Early child care facilities can voluntarily participate in the KIDS NOW rating. A higher quality rating means better child-to-caregiver ratios, program curriculum, child care training, program regulatory compliance, and personnel.

No child care centers with STARS rating.

Rating	Child Care Centers		Child Care C
	Licensed	Certified	Licensed C
STARS	0	0	0

Wisconsin shares data with the public about how groups of students, including English learners, are doing in school.



Massachusetts includes information about English learner high school graduates attending institutions of higher education in its high school feedback reports.

2011-12 Graduates Attending Institutions of Higher Education (School)  
 All Colleges and Universities - ELL

Report Type:  Year:  Student Group:  In/Out of State:

\* Click any column header to sort ascending (first click) or descending (second click).  
 NOTES: Results are not reported for higher education enrollments of fewer than 15.  
[More about the data.](#)

SCHOOL	Org Code	# High School Graduates (Desc)	# Attending Coll./Univ.	% Attending Coll./Univ.	% Private Two-Yr	% Private Four-Yr	% Public Two-Yr	% Public Four-Yr	% MA Community College	% MA State University	% Univ. of Mass.
Brockton - Brockton High	00440505	165	109	66.1	0.0	6.4	79.8	13.8	78.9	4.6	8.3
Lowell - Lowell High	01600505	160	117	73.1	0.0	12.0	63.2	24.8	61.5	0.9	23.9
Boston - Brighton High	00350505	73	37	50.7	2.7	24.3	62.2	10.8	62.2	2.7	8.1
Quincy - Quincy High	02430505	72	60	83.3	0.0	28.3	43.3	28.3	38.3	1.7	26.7
Boston - East Boston High	00350530	69	18	26.1	5.6	27.8	55.6	11.1	55.6	5.6	5.6
Worcester - South High Community	03480520	67	42	62.7	0.0	14.3	73.8	11.9	73.8	2.4	9.5
Framingham - Framingham High School	01000515	63	31	49.2	0.0	16.1	64.5	19.4	64.5	9.7	6.5
Boston - Madison Park High	00350537	61	30	49.2	0.0	16.7	76.7	6.7	76.7	3.3	3.3
Boston - Charlestown High	00350515	60	43	71.7	2.3	34.9	25.6	37.2	25.6	4.7	30.2